



Infant Feeding in Emergencies (IFE) Core Group



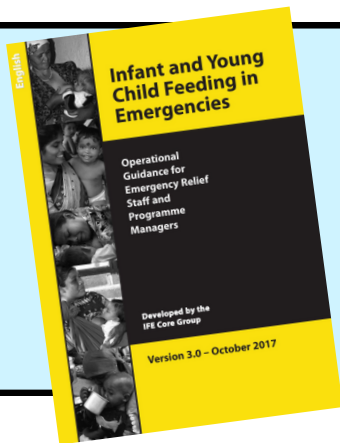
What is the IFE Core Group?

The Infant Feeding in Emergencies (IFE) Core Group is a global collaboration of agencies and individuals that formed in 1999 to address policy guidance and training resource gaps hampering programming on infant and young child feeding support in emergencies.



What does the IFE Core Group do?

The IFE Core Group does not directly implement programmes but rather develops guidance and resource materials, document lessons learned, and build capacity for effective Infant and Young Child Feeding (IYCF) support in emergency contexts. The IFE Core Group also acts as Global Thematic Working Group within the Global Nutrition Cluster (GNC).



Infant and Young Child Feeding in Emergencies: Operational Guidance v.3

(2017) Available in 14 languages!

This document provides concise, practical guidance on how to ensure appropriate infant and young child feeding in emergencies. It applies to emergency preparedness, response and recovery worldwide.

IYCF-E Infographic series

Available in 9 languages!

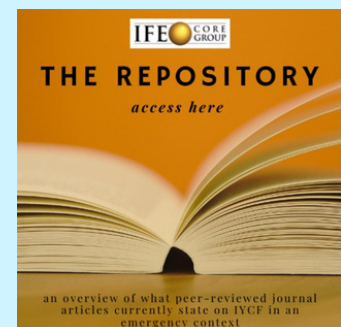
Based on the Operational Guidance on Infant and Young Child Feeding in Emergencies (OG-IFE), this collection aims to assist in implementing specific actions and recommendations within the guidance.



IYCF-E Research Repository

The IYCF-E Repository provides an overview of peer-reviewed journal articles on IYCF in an emergency context.

Subscribe to the mailing list for quarterly updates.



Ask a question on en-net

Free bilingual online platform developed by ENN for field practitioners seeking urgent technical advice on a broad range of nutrition issues, including IYCF-E. You can submit questions anytime, even anonymously.



Emergency Nutrition Network (ENN)



@IFECoreGroup



ife@enonline.net



IFE Core Group

Useful infant feeding in emergencies tools



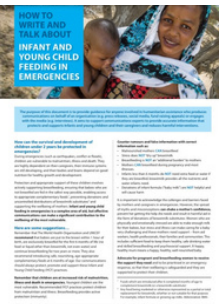
Operational Guidance on Breastfeeding Counselling in Emergencies (2021)

A pragmatic guide that covers key considerations and potential adaptations when applying WHO's 2018 guideline on the Counselling of Women to Improve Breastfeeding Practices.



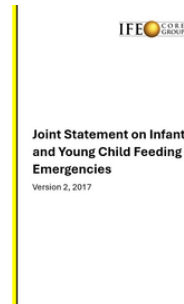
Chemical, biological, radiological and nuclear (CBRN) threats in wartime situations (2023)

Guidelines for the breastfeeding population in the context of the most common chemical and biological agents along with guidance for the first three days after a nuclear power plant emergency.



How to write and talk about IYCF-E & Information for the media (2018)

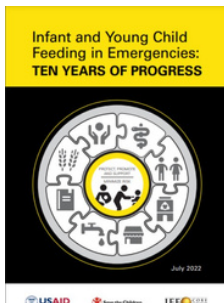
These resources aim to support communications experts to provide accurate information that protects and supports infants and young children and their caregivers and reduces harmful interventions.



Joint Statement on IYCF-E Template (2017)

This template joint statement can be adapted to help secure immediate, coordinated, multi-sectoral action on IYCF in an emergency.

Research and other resources



IYCF-E: Ten years of progress (2022)

This report represents the first stocktake to highlight Member State adoption of measures to maximise protecting IYCF-E in line with World Health Assembly Resolution 63.23.



Special Compilation: Complementary Feeding in Emergencies

In this special compilation, UNICEF and ENN present a wealth of experiences of complementary feeding programming in fragile and emergency settings.

Courses and Webinars



IYCF-E during Infectious Disease Outbreaks (2024)

eLearning course designed to equip learners with foundational knowledge on how to protect, promote, and support recommended

IYCF practices in humanitarian settings during outbreak preparedness and response.

Check out our past webinars:

- Wet Nursing during Emergency Contexts (April 2024)
- Communicating IYCF-E and the role of the media: getting the right message across (Oct, 2023)
- Complementary Feeding in Emergencies - Programming and Resources (Sep, 2022)
- Providing Breastfeeding Counselling During Emergencies: How Can We Do That? (Oct, 2022)

And more

Discover the IYCF-E Hub

A global portal to the most relevant resources related to infant and young child nutrition in humanitarian contexts

